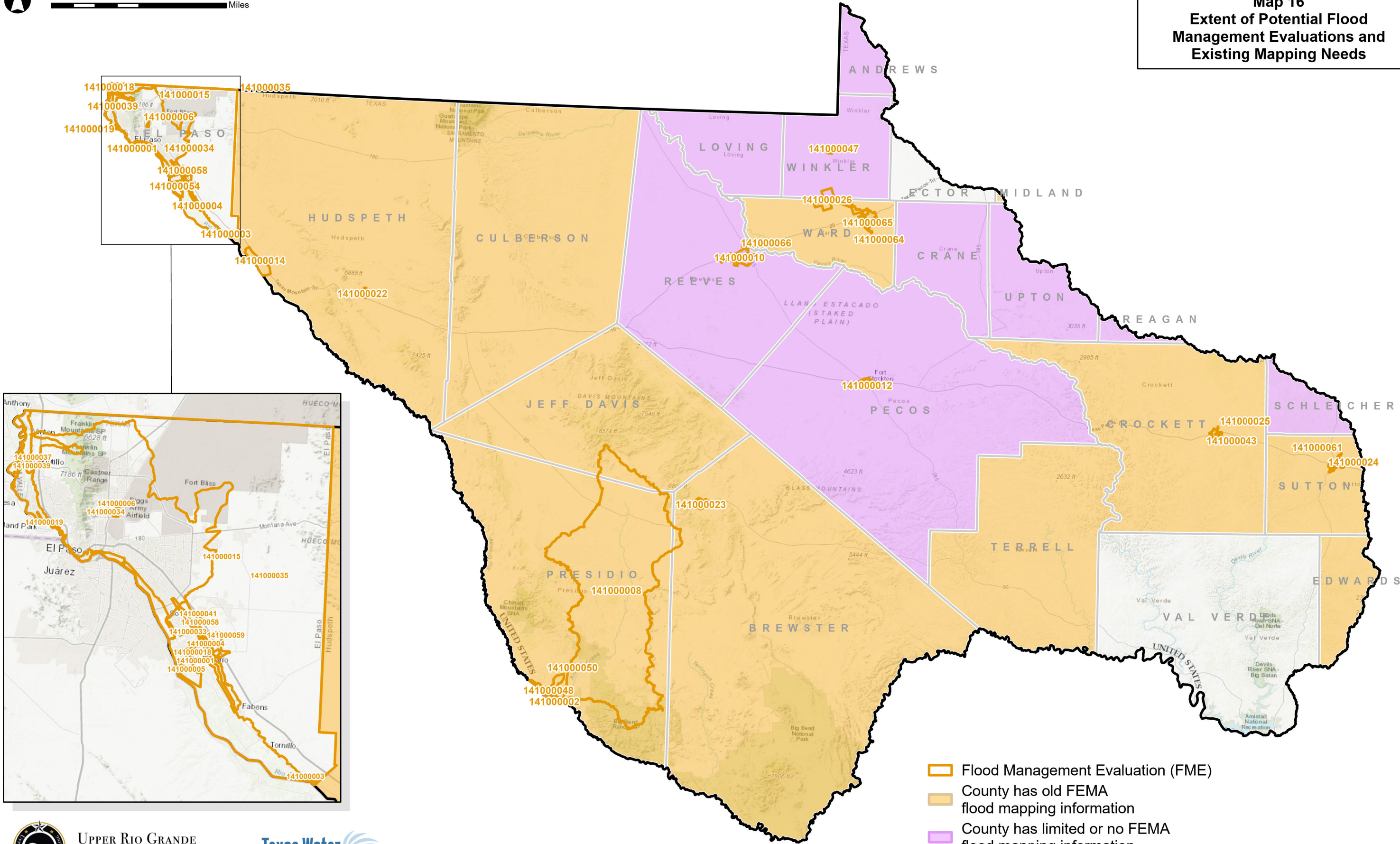





**Map 16**  
**Extent of Potential Flood**  
**Management Evaluations and**  
**Existing Mapping Needs**



-  Flood Management Evaluation (FME)
-  County has old FEMA flood mapping information
-  County has limited or no FEMA flood mapping information



UPPER RIO GRANDE  
 FLOOD PLANNING



AECOM