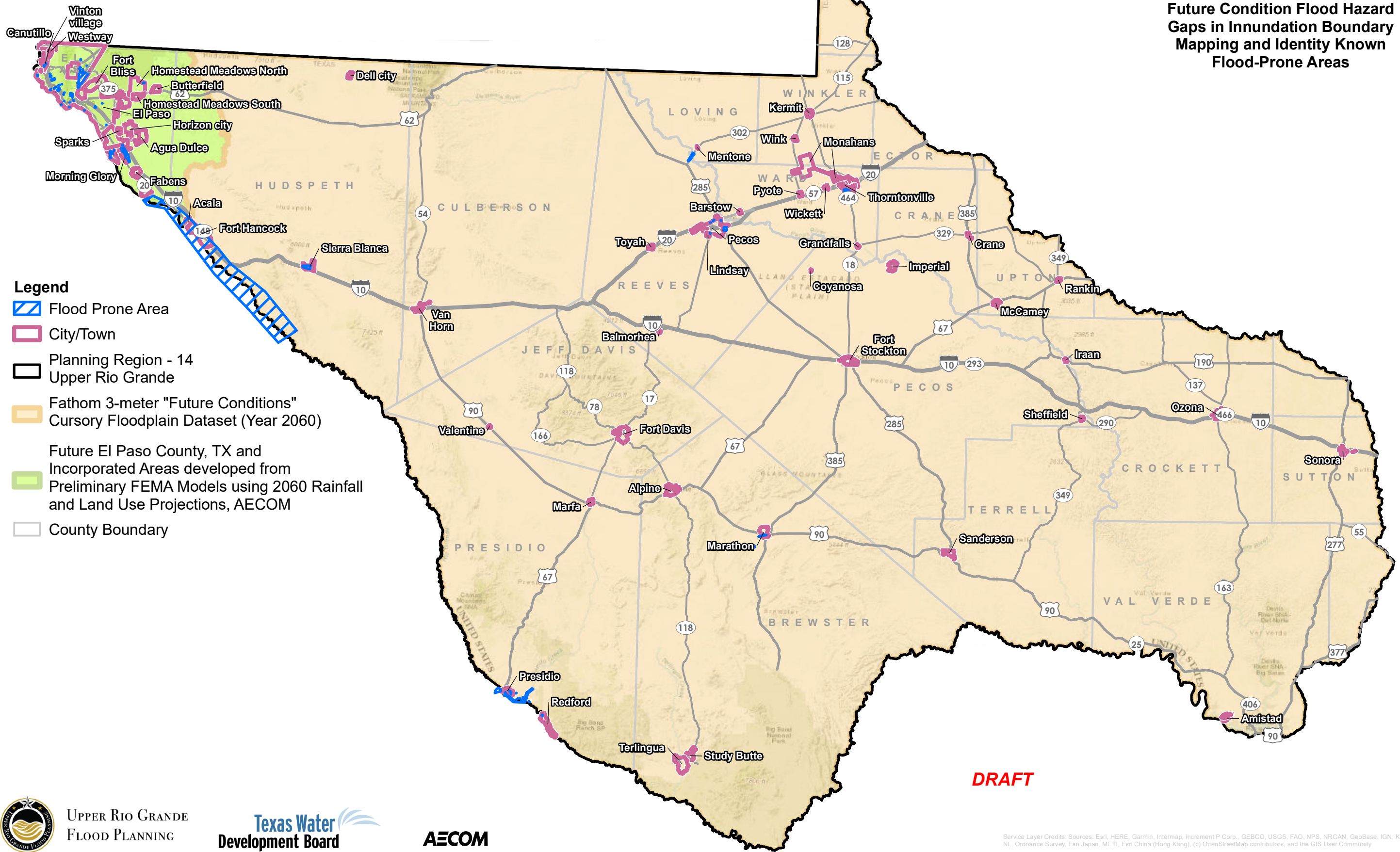



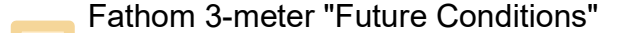




Map 10
Future Condition Flood Hazard
Gaps in Inundation Boundary
Mapping and Identity Known
Flood-Prone Areas



Legend

-  Flood Prone Area
-  City/Town
-  Planning Region - 14 Upper Rio Grande
-  Fathom 3-meter "Future Conditions" Cursory Floodplain Dataset (Year 2060)
-  Future El Paso County, TX and Incorporated Areas developed from Preliminary FEMA Models using 2060 Rainfall and Land Use Projections, AECOM
-  County Boundary

DRAFT



Service Layer Credits: Sources: Esri, HERE, Garmin, Intermap, increment P Corp., GEBCO, USGS, FAO, NPS, NRCAN, GeoBase, IGN, Kadaster NL, Ordnance Survey, Esri Japan, METI, Esri China (Hong Kong), (c) OpenStreetMap contributors, and the GIS User Community